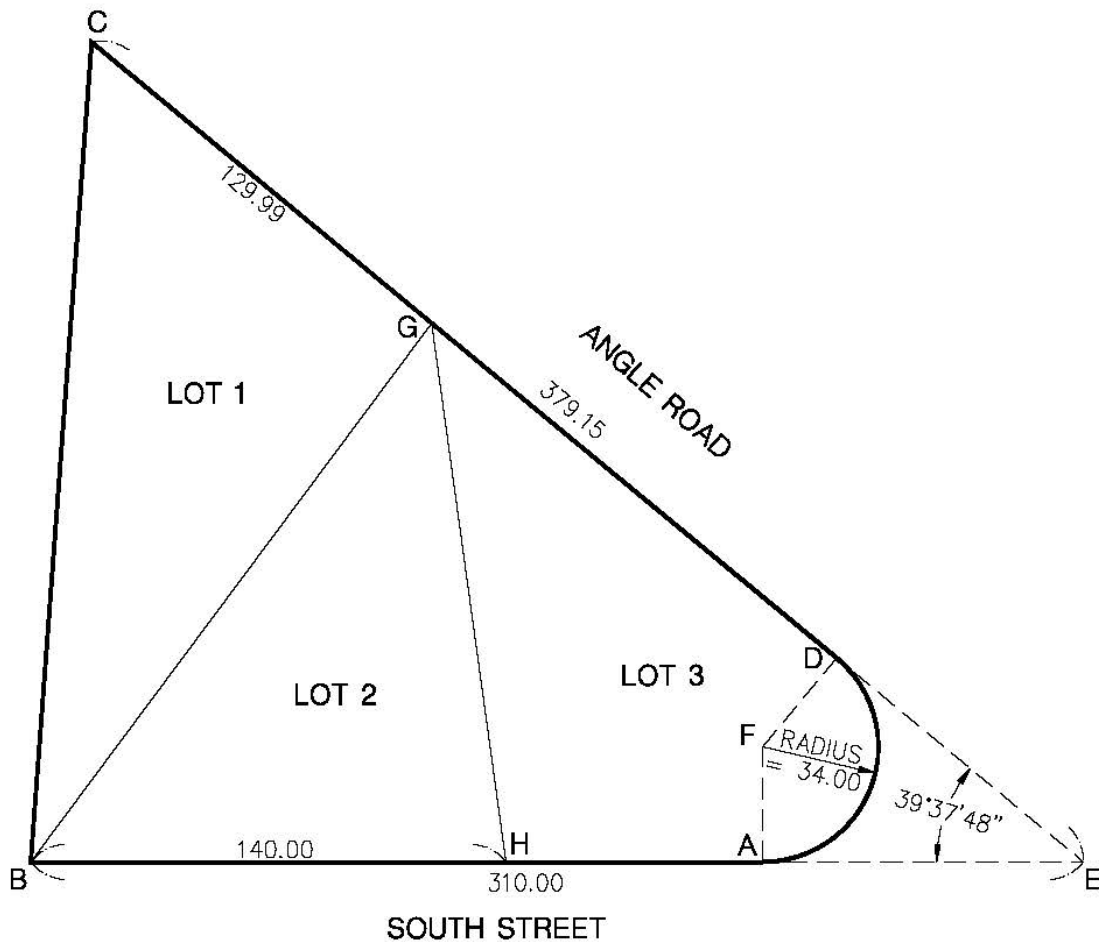


TRIG-STAR PROBLEM LOCAL COMPETITION

A FATHER HAS DIVIDED A TRACT OF LAND AS SHOWN BY FIGURE A, B, C, D, AND ARC DA INTO LOTS FOR HIS THREE CHILDREN. THE TIME HAS COME FOR THE CHILDREN TO DETERMINE WHO GETS WHICH LOT. THEY DECIDE TO DRAW FROM A DECK OF CARDS FOR FIRST AND SECOND CHOICE. THE CHILDREN WOULD LIKE MORE INFORMATION BEFORE THEY MAKE THEIR CHOICES.



FIND:

DISTANCE BC = 242.50 (5 POINTS)

DISTANCE BG = 198.00 (5 POINTS)

DISTANCE GH = 160.42 (5 POINTS)

ARC DISTANCE AD = 83.30 (5 POINTS)

AREA LOT 1 = B,C,G,B = 12,851 (5 POINTS)

AREA LOT 3 = A,H,G,D, ARC DA = 11,716 (5 POINTS)

REQUIRED ANSWER FORMAT

DISTANCES: NEAREST HUNDREDTH
AREA: NEAREST WHOLE UNIT

PAGE TOTAL: _____ POINTS