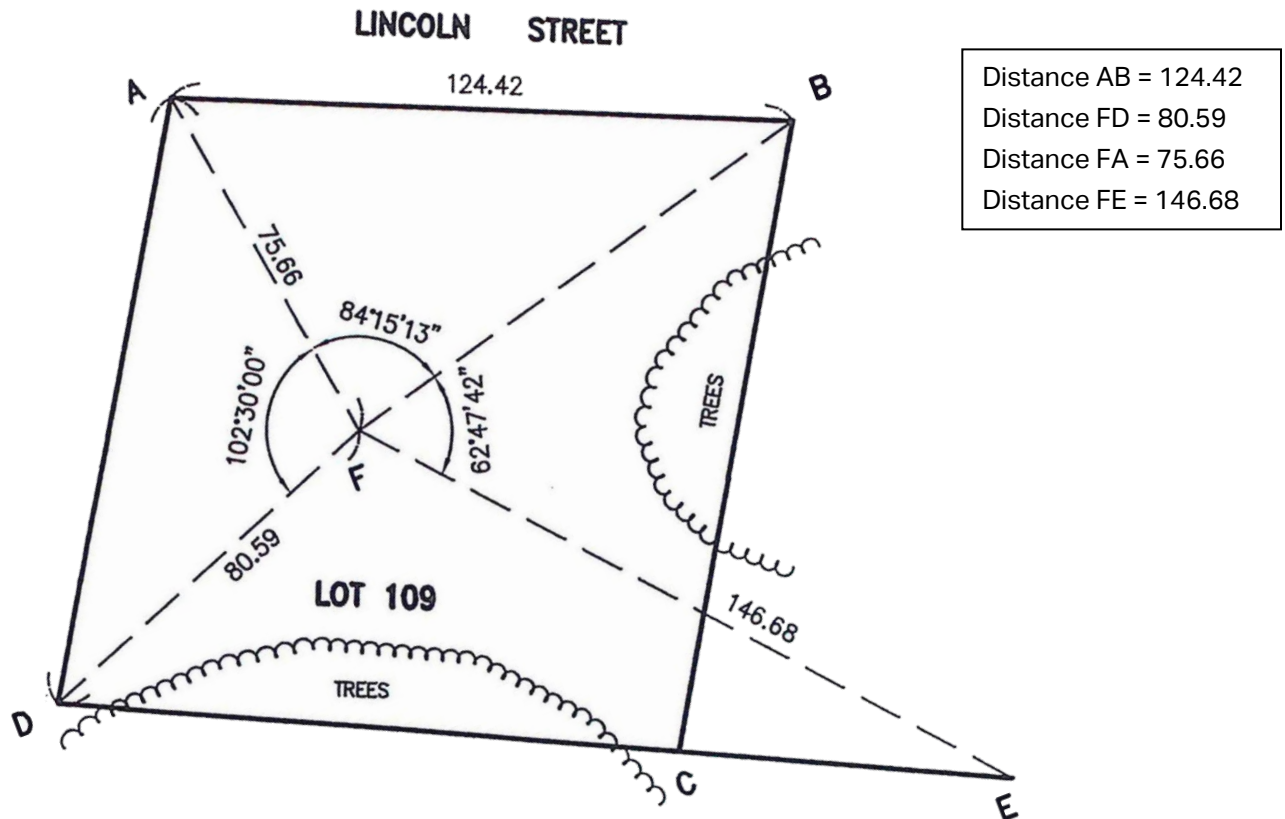


PROBLEM CORNER 21.2

PROBLEM:

The owner of lot 109, wants to obtain a building permit of lot 109 and hires a surveyor to complete a boundary survey. The surveyor finds existing monuments at points A, B, and D, and needs to reestablish point C. Trees obstruct the view along lot lines as shown, so the surveyor sets a control point at point F from which all four lot corner locations can be seen. The surveyor also finds a monument at point E and notes that point C would be on a straight-line connecting points D and E. It is also noted that line AD is parallel to line BC.



Distance AB = 124.42
Distance FD = 80.59
Distance FA = 75.66
Distance FE = 146.68

FIND:
 Distance DA = _____
 Distance FC = _____
 Distance DC = _____
 Angle BFC = _____
 Area ABCD = _____
Required Answered Format
 Distances: Nearest Hundredth
 Area: Nearest Whole Unit

ANSWERS:
 DISTANCE DA =
 DISTANCE FC =
 DISTANCE DC =
 ∠ BFC =
 AREA ABCD =